



MYCIRCUIT, INC.

Burn in System. PCB Design and Fabrication. Embedded System Projects

Burn in Driver

MCD-8P-I2C-SPI-3C

Burn in Test Features

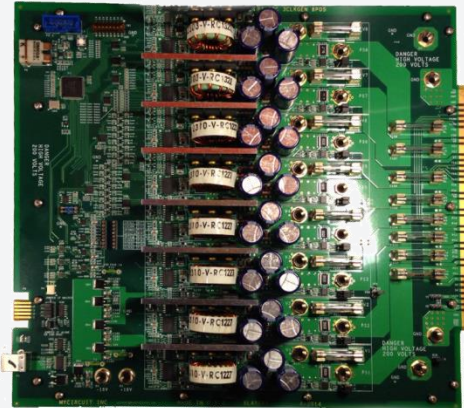
- ✓ Customized Built in Power Supplies
- ✓ Controls V and I supply per BIB
- ✓ Programmable Voltage/current supply
- ✓ 95% Power Supply Accuracy

Software Highlights

- ✓ Controls Burn in Test features
- ✓ Windows GUI software interface are included
- ✓ Real time monitoring V/I per BIB
- ✓ Auto update of data on MS Excel
- ✓ Using MYCIRCUIT PIVM Software

Driver Capabilities

- ✓ 8 Power Supply (8 Pos)
- ✓ 3 Clock Gen 0.1 Hz TO 5.0 MHz
- ✓ Oven Temperature Monitoring
- ✓ I2C and SPI Features



MYCIRCUIT PIVM SOFTWARE INTERFACE

Set and Assign Voltage, Current

Set and Assign Frequency

Set and Enable I2C features

Set and Enable SPI features

Set and Assign different Signal Patterns

Detect Failing Slot or BIB during BI process

Output all data to Excel File

Lot ID	Set_ID	Set_Used	BIB_ID	DUT_Op	Volt1	Ioc1	DUT_mic1	Volt2	Ioc2	DUT_mic2	Volt3	Ioc3	DUT_mic3	Status
AJ43244.1	1	[X]	BLC0844	177	-	-	-	14.32	2.38	14	-	-	-	Pass
AJ43244.1	2	[X]	BLC0801	177	-	-	-	14.48	2.076	12.31	-	-	-	Pass
AJ43244.1	3	[X]	BLC0879	174	-	-	-	14.45	2.46	14.3	-	-	-	Pass
AJ43244.1	4	[X]	BLC0892	175	-	-	-	14.46	2.371	14.2	-	-	-	Pass
AJ43244.1	5	[X]	BLC0891	173	-	-	-	14.29	2.076	12.97	-	-	-	Pass
AJ43244.1	6	[X]	BLC0894	175	-	-	-	14.53	2.391	13.44	-	-	-	Pass

"We customize and design base on your requirements"

MYCIRCUIT, INC. USA
1250 Oakmead Pkwy. Suite 210
Sunnyvale, CA 94085
Phone: (408) 306-2959
Email: support@burninboard.com
Website: www.burninboard.com

For Philippines Support:
Address: Blk 40 Lot 21 Denver St. Landmark
Subdivision Parian Calamba City
Local: (049)5767855
Email: renato.yambao@burninboard.com
Contact: 0925-8672274
Email: richard.cristobal@burninboard.com
Contact: 0917-874-3794

Products and Capabilities:

- Burn in System
- Burn in Driver with Power Supply
- Custom Burn in Board Driver
- PC Based Oven Monitoring System

- Burn in Board
- Embedded System Projects
- PCB Design and Assembly
- PCB Fabrication